

FOR ADULTS WITH MODERATE-TO-SEVERE PLAQUE PSORIASIS



## READY FOR A TREATMENT THAT'S IN IT FOR THE LONG HAUL?\*

**ILUMYA® DELIVERS RESULTS AFTER JUST  
2 DOSES. AND 5 YEARS INTO TREATMENT,  
IT'S STILL GOING STRONG.**

\*Based on 5-year data.

### What is ILUMYA?

ILUMYA® (tildrakizumab-asmn) is a prescription medicine used to treat adults with moderate to severe plaque psoriasis who may benefit from taking injections, pills (systemic therapy), or phototherapy (treatment using ultraviolet or UV light).

### SELECTED IMPORTANT SAFETY INFORMATION

ILUMYA is not for everyone, only your doctor can determine if it's right for you. Do not take ILUMYA if you are allergic to ILUMYA or any of its ingredients. ILUMYA may lower your ability to fight infections and may increase your risk of infections. Before starting treatment, your doctor should check you for tuberculosis and infections.

**Please read the Important Safety Information on pages 10 and 11 of this brochure and the enclosed full Prescribing Information and Medication Guide.**

**Visit [ILUMYA.com](https://www.ilumya.com) for more information.**

 **ILUMYA®**  
tildrakizumab-asmn  
Injection 100 mg/mL



## Choose a treatment that goes the distance

With ILUMYA® (tildrakizumab-asmn), moderate-to-severe plaque psoriasis patients see results after just 2 doses, with most achieving clear or almost clear skin in as little as 12 weeks. And 5 years into treatment, it's still going strong. Ask your doctor if ILUMYA® could be right for you.

### HOW ILUMYA® WORKS

Biologics target a specific part of the immune system—rather than all of it—to block only the molecules known to make psoriasis symptoms worse.

ILUMYA® is an IL-23 blocker, an advanced medicine used for moderate-to-severe plaque psoriasis treatment to help balance or regulate an overactive immune system. ILUMYA® gets to the source and works below the surface. It's an injection that works within the body to balance an overactive immune system, helping to reduce the symptoms you see on your skin to deliver lasting results.



*“Almost immediately I had relief. It was amazing. I haven’t had a flare-up since!”*

Individual results may vary.

**Nancy H., 65**

Started ILUMYA® in September 2019

ILUMYA® (tildrakizumab-asmn) is contraindicated in patients with a history of serious hypersensitivity to tildrakizumab.

The most common ( $\geq 1\%$ ) adverse reactions for ILUMYA® compared to placebo are upper respiratory infections (14% vs 12%), injection site reactions (3% vs 2%), and diarrhea (2% vs 1%).

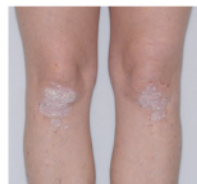
**ILUMYA®**  
tildrakizumab-asmn  
Injection 100 mg/mL



# The look of lasting results

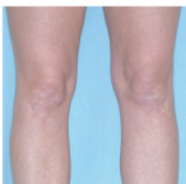
THESE BEFORE-AND-AFTER PHOTOS SHOW  
A REAL PATIENT'S RESULTS WITH ILUMYA®

## BEFORE



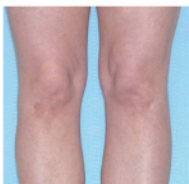
Psoriasis plaques  
on the legs and  
above the knees

## AFTER 2 DOSES



Psoriasis plaques  
on the legs and  
above the knees  
begin to clear  
after **12 weeks**  
on ILUMYA®  
(tildrakizumab-asmn)

## AFTER 3 DOSES



Psoriasis plaques  
on the legs and  
above the knees  
continue to clear  
after **28 weeks**  
on ILUMYA®



## CLEARER AFTER 2 DOSES

6 out of 10 people were clear or almost clear  
in as little as **12 weeks** (after just 2 doses).



## 1 YEAR AND COUNTING

8 out of 10 people who had 75% clearer skin  
with ILUMYA® at 7 months were still clearer  
after **1 year** of treatment.



## STILL GOING STRONG AT 5 YEARS

9 out of 10 people who achieved clear or  
almost clear skin after 1 year were still seeing  
results **5 years into treatment**.

ILUMYA® may increase the risk of infection compared with placebo (23% vs 22%). In clinical trials, the most common ( $\geq 1\%$ ) infections were upper respiratory infections (14% vs 12%), injection site reactions (3% vs 2%), and diarrhea (2% vs 1%).



## A well-studied safety profile

When choosing a treatment for moderate-to-severe plaque psoriasis, it's important to consider the potential benefits and side effects. Talk to your doctor to see if ILUMYA® (tildrakizumab-asmn) may be the treatment you're looking for.



## COMMON ADVERSE REACTIONS

The most common ( $\geq 1\%$ ) adverse reactions for ILUMYA® compared to placebo are upper respiratory infections (14% vs 12%), injection site reactions (3% vs 2%), and diarrhea (2% vs 1%).



## NO ROUTINE LAB MONITORING NEEDED AFTER INITIAL TESTING

Before starting ILUMYA®, your doctor may perform baseline tests and should check for tuberculosis. After checking, no routine lab monitoring is required unless your doctor feels it's necessary.



## WORKS REGARDLESS OF BMI\* OR WEIGHT

In clinical trials of people treated with ILUMYA®, those who had a higher BMI had similar skin clearing and risk of serious infection as those who didn't have a higher BMI.

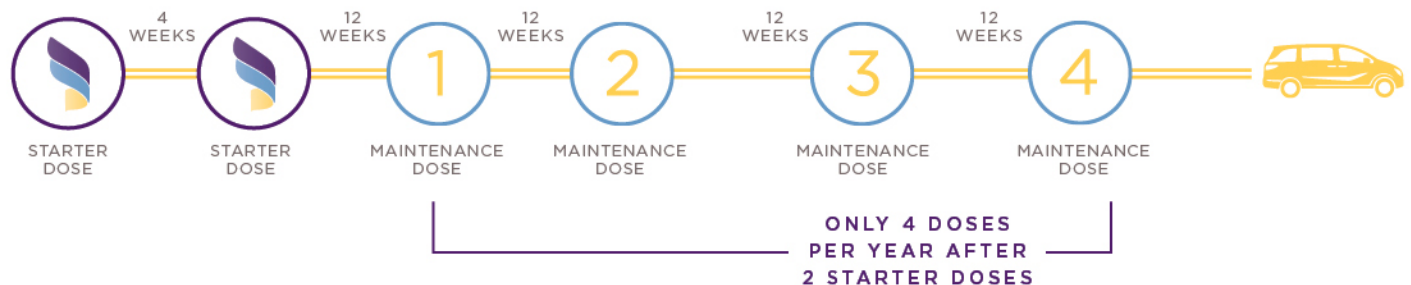
\*Body mass index (BMI) is a measure of body fat based on height and weight.

 **ILUMYA®**  
tildrakizumab-asmn  
Injection 100 mg/mL

# Discover the dosing advantage

## TREATMENT IS ADMINISTERED IN-OFFICE ONLY 4 TIMES A YEAR AFTER 2 STARTER DOSES

ILUMYA® (tildrakizumab-asmn) isn't a topical that you have to apply a few times a day. It isn't a pill that you have to take daily. In fact, ILUMYA® offers fewer doses per year than most other biologics used to treat moderate-to-severe plaque psoriasis. So now, your treatment doesn't have to be a daily, weekly, or even monthly chore.



Actual ILUMYA® patient



*“The dosing schedule is just 2 starter doses, then once every 3 months. That’s it.”*

Individual results may vary.

**Pete M., 42**

Started ILUMYA® in June 2019

ILUMYA® may increase the risk of infection compared with placebo (23% vs 22%). In clinical trials, the most common ( $\geq 1\%$ ) infections were upper respiratory infections.

Hear more from real ILUMYA® patients in their own words at [ILUMYA.COM/patient-stories](https://www.ilumya.com/patient-stories).

Your doctor will check you for tuberculosis (TB) before starting treatment with ILUMYA®.

 **ILUMYA®**  
tildrakizumab-asmn  
Injection 100 mg/mL



# ILUMYA SUPPORT

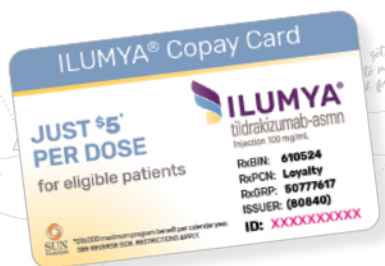
LIGHTING THE WAY®

## DISCOVER SUPPORT THAT GETS YOU GOING AND KEEPS YOU GOING

ILUMYA SUPPORT Lighting the Way® is a comprehensive moderate-to-severe plaque psoriasis support program that offers financial assistance, personalized support emails, and text message reminders.

## PAY NO MORE THAN \$5\* FOR ILUMYA®

With the ILUMYA® Copay Card, eligible patients with commercial insurance may pay no more than \$5\* per dose. To learn more, visit [ILUMYA.com](http://ILUMYA.com) or call the ILUMYA SUPPORT® team at 855-4ILUMYA (855-445-8692), Monday through Friday, 8 AM to 8 PM ET.



## COVERAGE WITH MEDICARE PART B

Because ILUMYA® (tildrakizumab-asmn) is a biologic medicine that is injected in the office by a medical professional, it is covered by Medicare Part B as a medical benefit.

\*The ILUMYA® Copay Program has a maximum benefit of \$16,000 per calendar year. Not valid for patients without commercial insurance coverage or if prescription is paid for by any state or federally funded healthcare program, including but not limited to Medicare, Medicaid, VA, DOD, or TRICARE. Available to US, Guam, Virgin Islands, or Puerto Rico residents only. Additional Terms and Conditions apply.

Go to [ILUMYA.COM/get-started](http://ILUMYA.COM/get-started) to learn more about savings options with ILUMYA®.



## Getting started with ILUMYA SUPPORT Lighting the Way®



*“I’m covered under Medicare Part B and have zero out-of-pocket costs for my ILUMYA® treatment.”\**

Individual results may vary.

Mike Q., 72

Started ILUMYA® in April 2019

\*Eligibility limits and exclusions apply.

 **ILUMYA®**  
tildrakizumab-asmn  
Injection 100 mg/mL

## What is ILUMYA?

ILUMYA® (tildrakizumab-asmn) is a prescription medicine used to treat adults with moderate to severe plaque psoriasis who may benefit from taking injections, pills (systemic therapy), or phototherapy (treatment using ultraviolet or UV light).

## IMPORTANT SAFETY INFORMATION

**What is the most important information I should know about ILUMYA?**

**Do not use ILUMYA if you have had a severe allergic reaction to ILUMYA or any of its ingredients.**

**Get emergency medical help right away if you get any of the following symptoms of a serious allergic reaction:**

- feel faint
- trouble breathing or throat tightness
- swelling of your face, eyelids, lips, mouth, tongue or throat
- chest tightness
- skin rash

ILUMYA is a medicine that may lower the ability of your immune system to fight infections and may increase your risk of infections. Your healthcare provider should check you for infections and tuberculosis (TB) before starting treatment with ILUMYA and may treat you for TB before you begin treatment with ILUMYA if you have a history of TB or have active TB. Your healthcare provider should watch you closely for signs and symptoms of TB during and after treatment with ILUMYA.

**Tell your healthcare provider right away if you have an infection or have symptoms of an infection, including:**

- fever, sweats, or chills
- muscle aches
- weight loss
- cough
- warm, red, or painful skin or sores on your body different from your psoriasis
- diarrhea or stomach pain
- shortness of breath
- burning when you urinate or urinating more often than normal
- blood in your phlegm (mucus)

**Before receiving ILUMYA, tell your healthcare provider about all of your medical conditions, including if you:**

- have any of the conditions or symptoms listed in the section “What is the most important information I should know about ILUMYA?”
- have an infection that does not go away or that keeps coming back
- have TB or have been in close contact with someone with TB
- recently received or are scheduled to receive a vaccine (immunization). You should avoid receiving live vaccines during treatment with ILUMYA.
- are pregnant or plan to become pregnant. It is not known if ILUMYA can harm your unborn baby.
- are breastfeeding or plan to breastfeed. It is not known if ILUMYA passes into your breast milk.

**Tell your healthcare provider about all the medicines you take, including prescription and over-the-counter medicines, vitamins, and herbal supplements.**

It is not known if ILUMYA is safe and effective in children under 18 years of age.

**What are the possible side effects of ILUMYA?**

**ILUMYA may cause serious side effects. See “What is the most important information I should know about ILUMYA?”**

The most common side effects of ILUMYA include: upper respiratory infections, injection site reactions and diarrhea. These are not all of the possible side effects of ILUMYA. Call your doctor for medical advice about side effects.

**You are encouraged to report any negative side effects of ILUMYA to FDA. Visit [www.fda.gov/medwatch](http://www.fda.gov/medwatch) or call 1-800-FDA-1088. You are also encouraged to report side effects or ADEs (adverse drug events) to our Drug Safety Department at 1-800-406-7984 or [drug.safetyUSA@sunpharma.com](mailto:drug.safetyUSA@sunpharma.com) (preferred) with as much information as available.**

**Please read the enclosed full Prescribing Information and Medication Guide for ILUMYA and discuss any questions with your doctor.**



Actual ILUMYA® patient



*"I'm taking care of my body from the inside, and I look better on the outside."*

Individual results may vary.

**Holly C., 42**

Started ILUMYA® in June 2020

Visit [ILUMYA.COM/get-started](https://www.ilumya.com/get-started)  
to learn more.



The ILUMYA registered trademarks are the property of Sun Pharma Global FZE.

© 2021 Sun Pharmaceutical Industries, Inc.

All rights reserved. PM-US-ILY-1695 10/2021